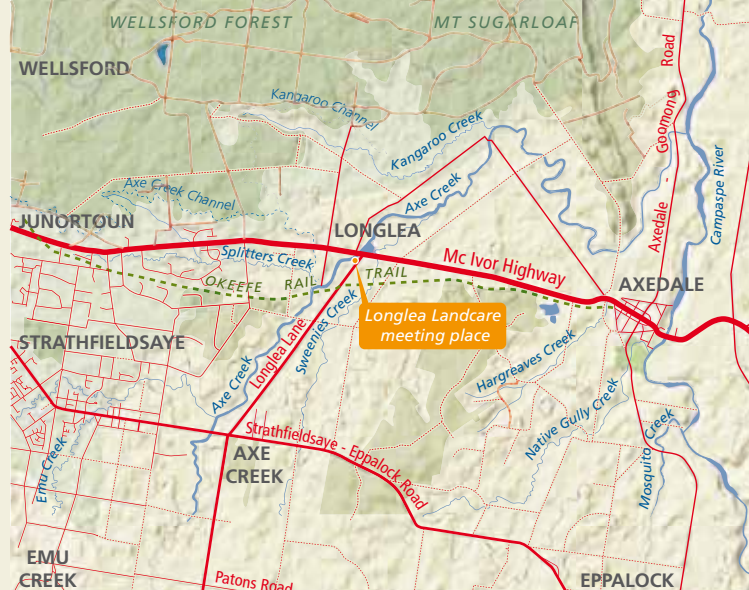


Why native plants are better

- **Better survival rates** - native plants, especially those local to your area are better suited to local conditions and are more likely to survive
- **Improve biodiversity** - native plants provide important habitat for local fauna including birds and mammals
- **Carbon sequestration** - native plants absorb carbon from the atmosphere
- **Reduce salinity** - native plants can lower the water table and assist in the control of salinity
- **Reduce soil erosion** - native plants stabilise the soil structure and can help reduce the effect of erosion, particularly along creek sides
- **Cheaper to plant** - native plants can be bought locally in smaller tubes for less than a couple of dollars. Smaller native plants grow just as well as more advanced plants.



Longlea and District Landcare Group area is bordered by Axedale and the Campaspe River (east), Junortoun (west), Strathfieldsaye - Eppalock Road (south) and Mt Sugarloaf (north) and includes the northern catchments of Axe Creek.



Above: Milkmaids
Burchardia umbellata
Right: Barking Gecko

Cover: Yellowbox
E Meliodora
Photos: Kylie McLennan

Meeting information

Meetings held bi-monthly from February to December on the 1st Monday of the month at 7.30pm.

Venue: Longlea Recreation Reserve, corner Longlea Lane and McIvor Highway.



Longlea Landcare

C/O Post Office Junortoun Vic 3551
(E) longlealandcare@gmail.com

Longlea and District Landcare Group

Native plants grow better



Longlea and District Landcare Group – Membership

Name

Property address

Postal address

Phone

Email

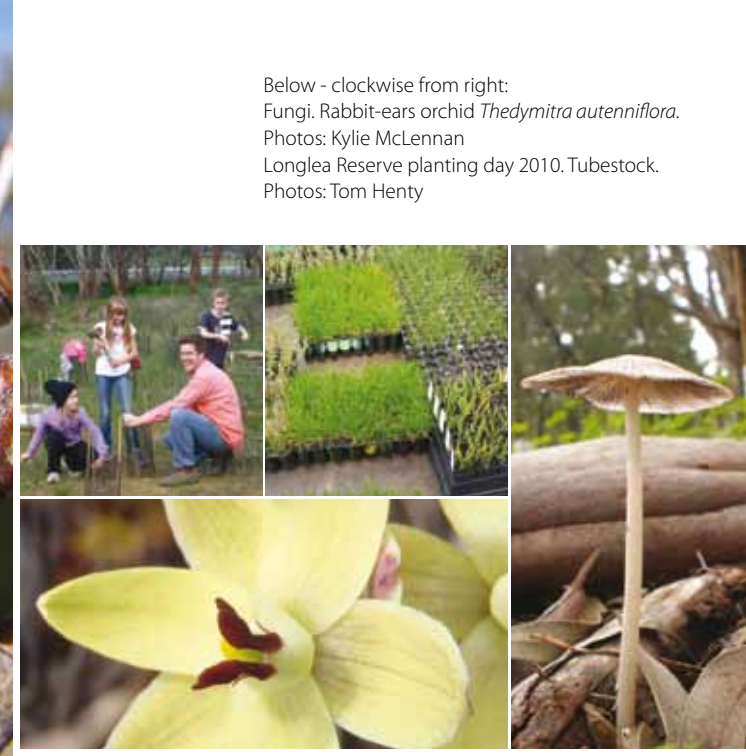
Area of interest

(one membership per property)

Group history, achievements and objectives

The Longlea and District Landcare Group was formed in 1997 to assist in the improvement and preservation of the local environment. The group undertakes projects on public and private land in weed and animal pest management, environmental enhancement and community education.

Longlea Landcare works closely with other community groups, local and state government and the local catchment management authority.



Below - clockwise from right:
Fungi. Rabbit-ears orchid *Thedymitra autenniflora*.
Photos: Kylie McLennan
Longlea Reserve planting day 2010. Tubestock.
Photos: Tom Henty



Top left: Running Postman
Kennedia prostrata
Left: Box Mistletoe flower
Amyena miquelii
Photos: Kylie McLennan

Above: Grey Crown Babbler
Photo: Adrian Martins

Why become a member of the Longlea Landcare Group?

Members can access a range of benefits including:

- The opportunity to bring along project ideas and for the group to make application for funding to complete works
- Access to the ideas and experience of other members
- Access to a range of equipment and books owned by the group that are useful for revegetation works including tree planters, tree watering and weed spraying equipment
- The opportunity to meet other like-minded residents in the community and participate in activities.

Above: Red Stringybark fruit
Macrorhynca
Photo: Kylie McLennan

Right: Planting, Cashens Road,
O'Keefe Railtrail 2010
Photo: Tom Henty

