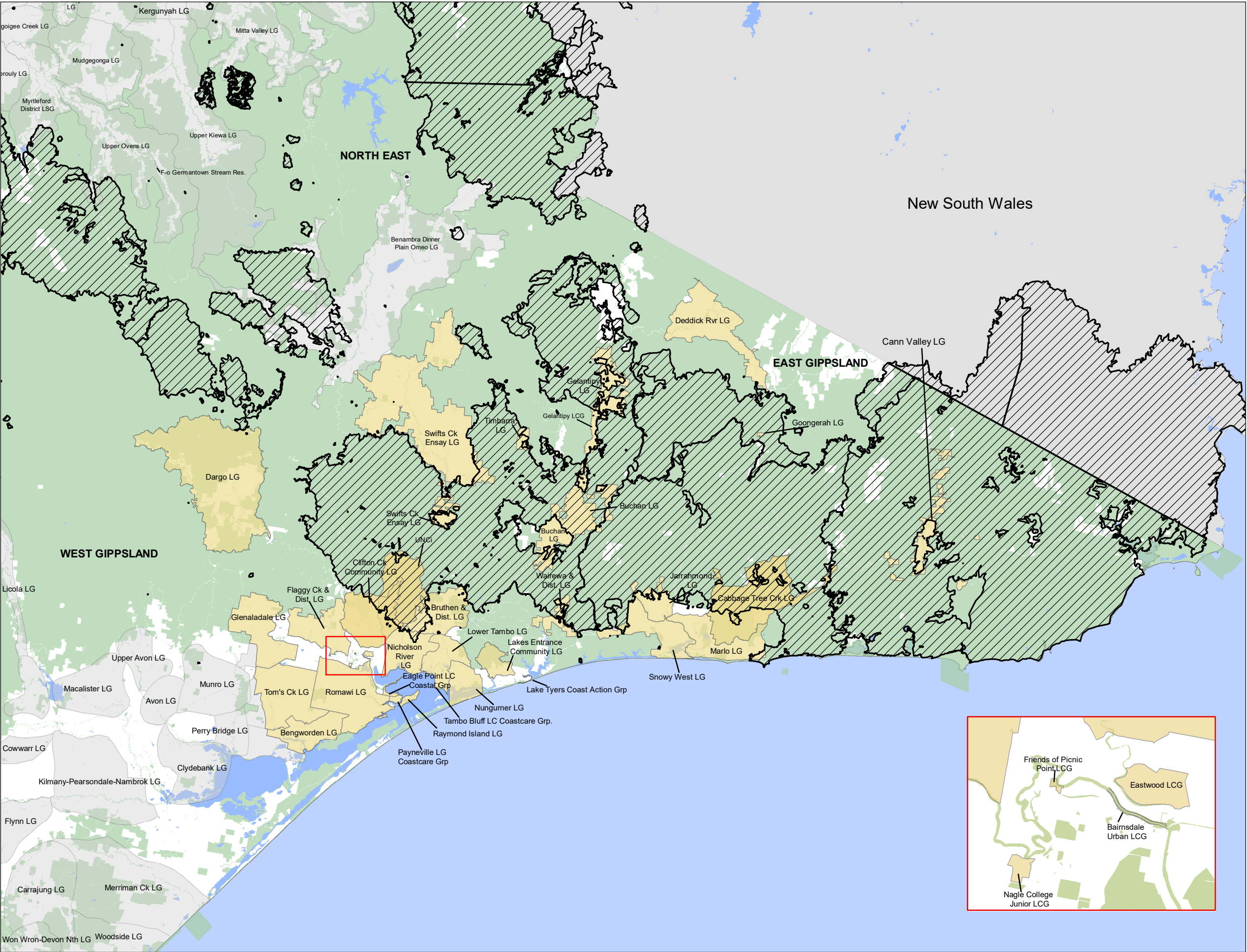
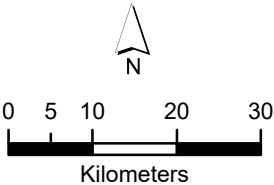


Landcare Groups in East Gippsland CMA Region within current fire extent (27/02/2020 - AM)



- Legend
- Catchment Management Authority boundary
 - Burnt Area 27/02/2020 AM
 - Landcare Groups in East Gippsland Region
 - Landcare Groups in other CMA Regions
 - Public Land



Disclaimer:
This map is a snapshot generated from Victorian Government data. The State of Victoria does not guarantee that the publication is without flaw of any kind or is wholly appropriate for your particular purposes and therefore disclaims all liability for error, loss or damage which may arise from reliance upon it. All persons accessing this information should make appropriate enquiries to assess the currency of the data.

Additional information
Spatial data is sourced from the Victorian Spatial Data Library (VSDL) and Emergency Management Victoria (eMap system)

Map produced by Knowledge and Decision Systems Branch, Biodiversity Division Monday, 2 March 2020
Copyright © The State of Victoria, Department of Environment, Land, Water and Planning, 2020

Landcare group data updated in 2014, 2015 & 2019.